



# INH30A

## Features

- Hydraulic Leveling
- 440 lb. Basket Capacity
- Buffered Controls
- Simultaneous Controls
- Controls Mounted on Basket
- Remote Lower Controls
- 3 Hydraulic System Filters
- Easy Access Hydraulic Tank
- Emergency Power
- No CDL Required
- 5-Year Limited Warranty
- Isuzu / Chevrolet / GMC NPR / W4500 Chassis
- Excellent driver visibility
- 33.5' Turning Radius
- Fuel Efficiency



## General Specifications INH30

- Height To Bottom Of Basket 30'
- Working Height 35'
- Horizontal Reach 22'
- Platform Capacity 440 lbs
- Stowed Travel Height 9'8"
- Minimum Tipping Load,  
Horizontally Extended,  
On Level Ground 660 lbs
- Minimum Tipping Load,  
Horizontally Extended,  
On 5 Degree Slope 585 lbs
- Wheel Lift 0"

## Boom Travel

- Outer Boom -12 to 77 degree
- Rotation 370 degree Non-Continuous

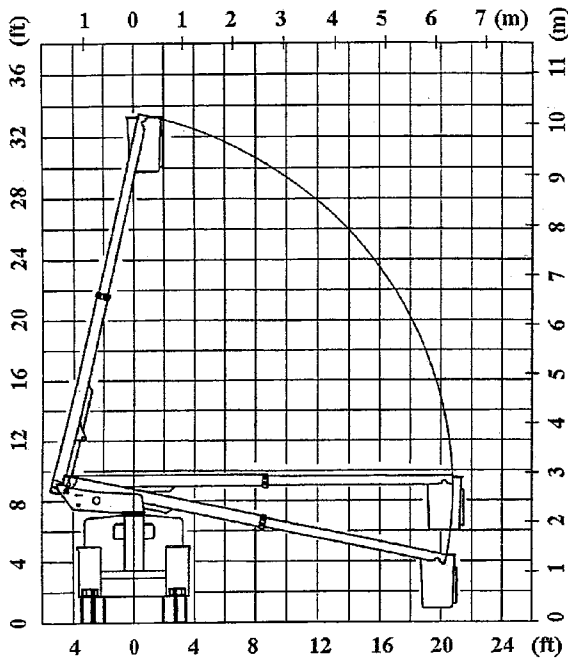
## Hydraulic System

- Operating Pressure 2000 PSI
- Flow Rate 5 GPM
- Filtration System:  
105 Mesh Suction Strainer,  
12 Micron High Pressure.  
100 Mesh In-Line Filter 3 Filters
- System Type Open Center

Distributed by **Aichi U.S.A. Inc.**

Glen Burnie, MD 410-590-1134

# Mechanical Specifications



|  |                              |   |                       |
|--|------------------------------|---|-----------------------|
| Model  | NH09A                        |   | INH30A                |
| Chassis  | Isuzu NPR70GL                |   |                       |
| Bucket   | Rated load                   | 182 kg                                    | 400 LBS               |
|  | Inner dimensions (L x W x H) | 610 x 610 x 1070 mm                       | 2.0 x 2.0 x 3.5 in    |
|  | Maximum floor height         | 9.017 m                                   | 29 ft 7 in            |
|  | Maximum working radius       | 6.3 m                                     | 20 ft 8 in            |
| Boom   | Boom length                  | 4,410 ~ 7,525 mm                          | 14ft-6in~24ft-8in     |
|  | Boom angle                   | -12 ~ 77 degrees                          |                       |
|  | Rotation angle               | Right : 185 degrees<br>Left : 185 degrees |                       |
| Actuating speed<br>at the flow of<br>10 liters / min<br>(2.64 gallons / min) | Elevation                    | Up  | 15 ~ 22 seconds       |
|  |                              | Down                                      | 15 ~ 22 seconds       |
|  | Telescoping                  | Out                                       | 10 ~ 17 seconds       |
|  |                              | In  | 10 ~ 17 seconds       |
| Rotation   | C.W                          | 60 ± 5 seconds / 360 degrees              |                       |
|  | C.C.W                        | 60 ± 5 seconds / 360 degrees              |                       |
| Hydraulic system   | Hydraulic oil                | Tank capacity                             | 30 liters / 8 gallons |
|  |                              | Recommended oil                           | Shell Tellus oil T22  |
|  | Rated pressure               | 175 kg / cm <sup>2</sup> / 2500 PSI       |                       |

